

## Update for Viking II – CDC Upgrades

Components marked with a “\*” are either new or modified in value.

Voltages marked with a “\*” are Keydown in AM or “Phone” mode under the following conditions:

Frequency: 3.880 MHz,

VFO 122 attached,

Osc. Current: 12 mA (Note: The oscillator tube in this rig is a 6AH6).

Buffer Current: 5 mA

Final Grid Current: 6 mA,

Final Plate Current: 280 mA,

Final Screen Voltage: 170V,

Modulator Screen Voltage: 297V,

Resting Modulator Current: 55 mA,

Exciter Frequency Control setting: 3.3-4.5,

Output Min. Max. Coupling Control setting: 4 and 2.3-3.5,

Audio Control setting: 5.5 for 95% Modulation with Hi-Z Dynamic microphones,

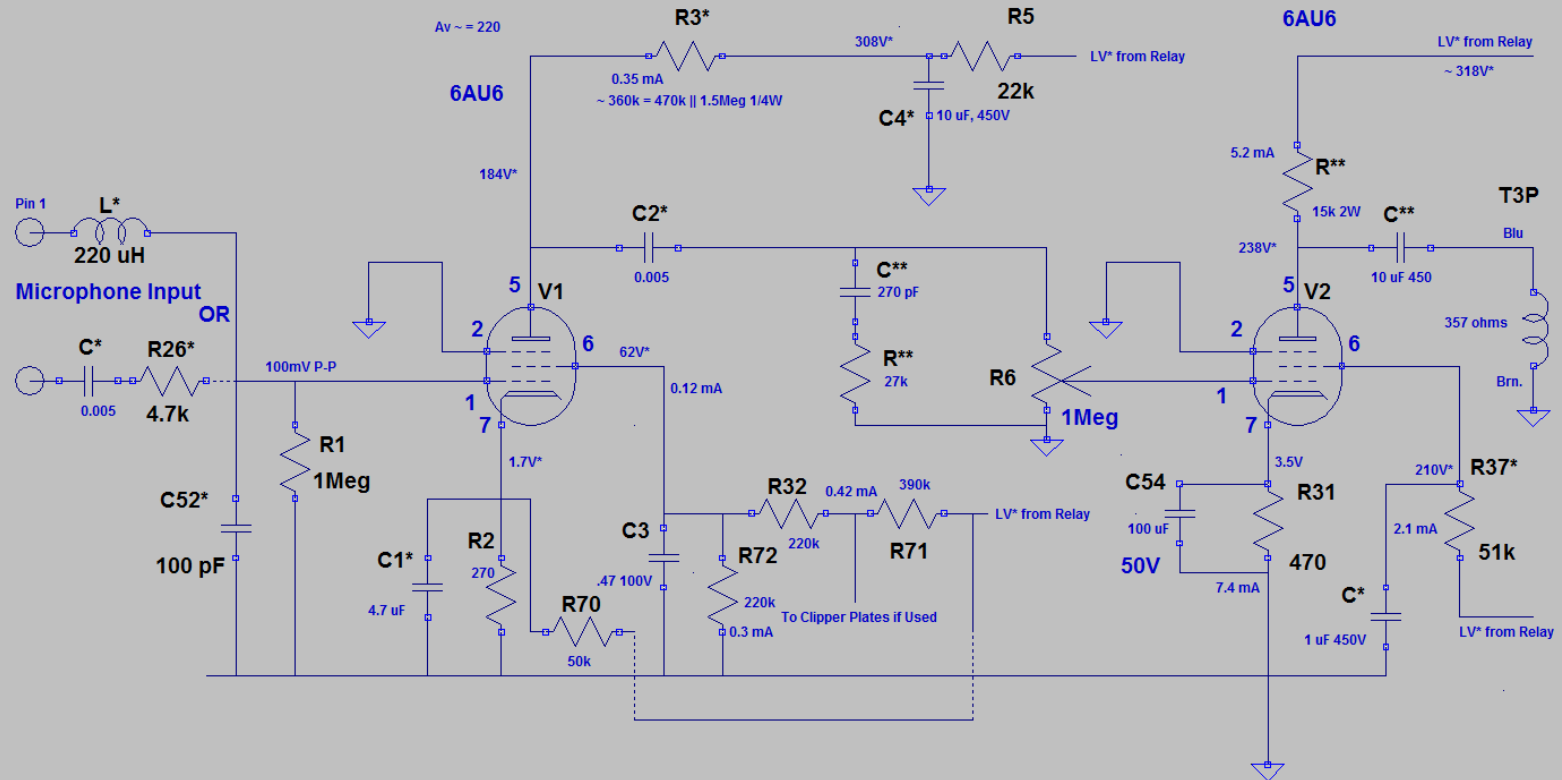
HV = 700V,

AC input voltage at VHF filters: = 120V,

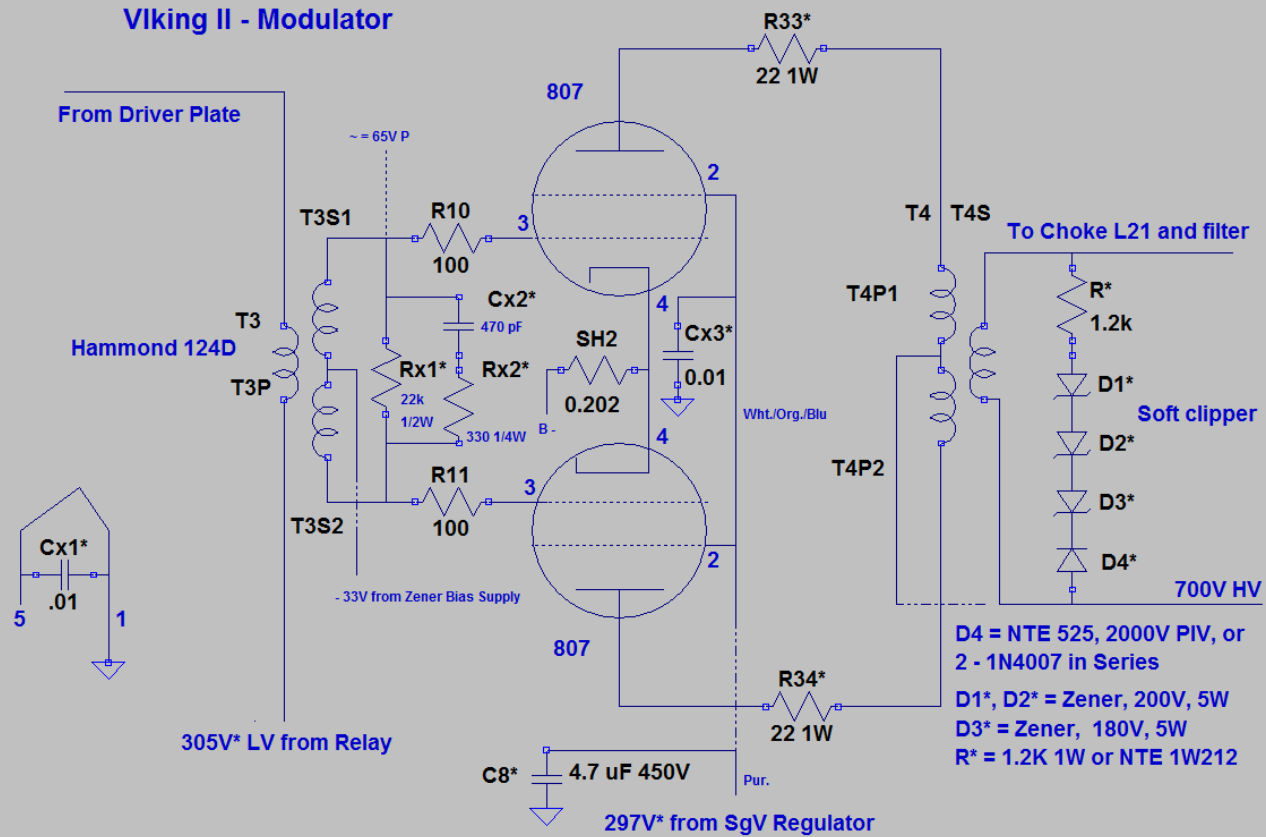
Resting Carrier Output Power: 110 Watts.

NOTE; Higher modulation percentages can be obtained by reducing output power to ~ 90 Watts.

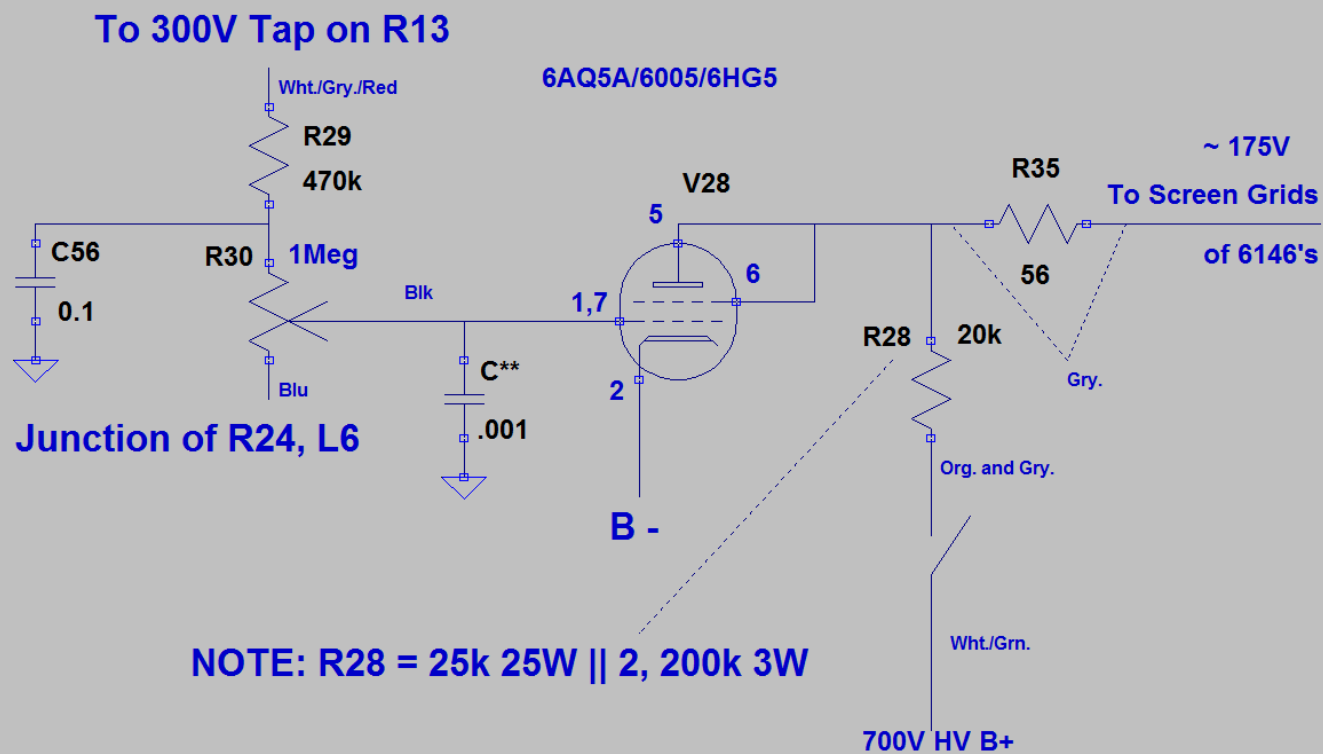
# Viking II - CDC Speech Amp and Driver



## Viking II - Modulator



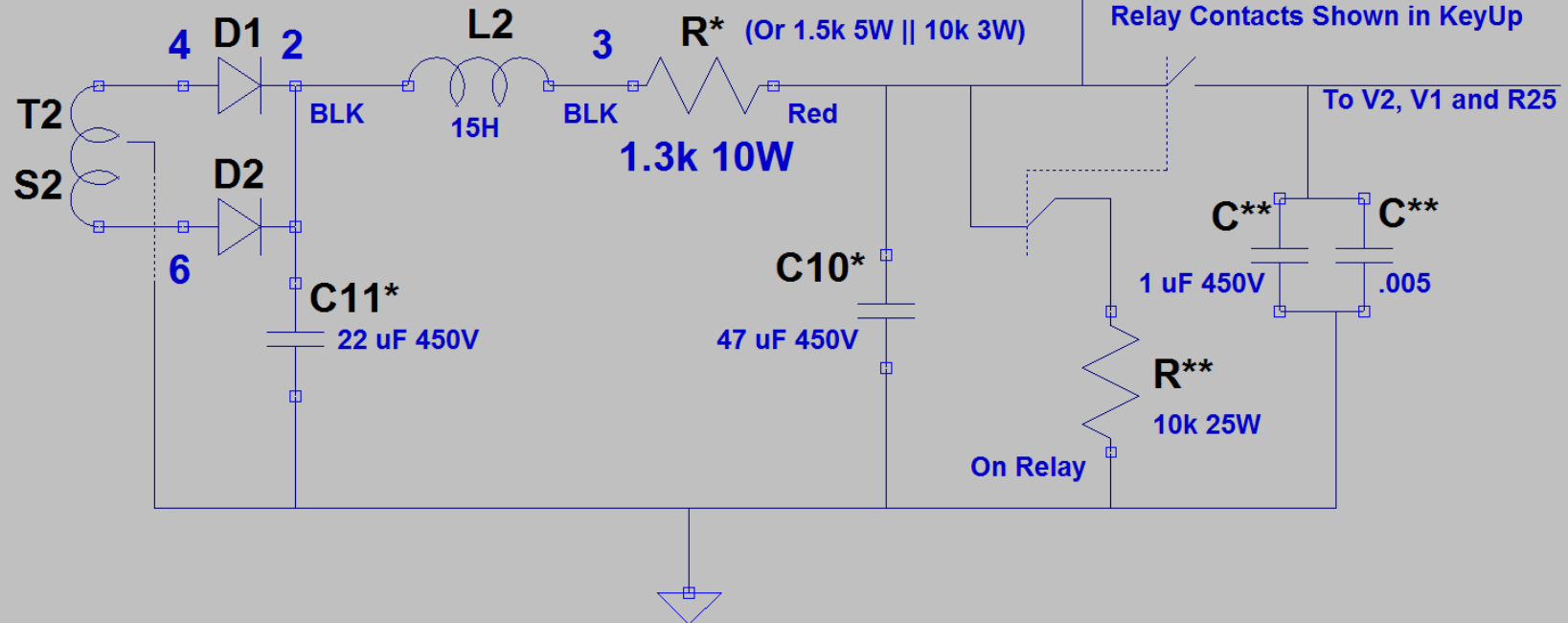
## Viking II Clamp Circuit



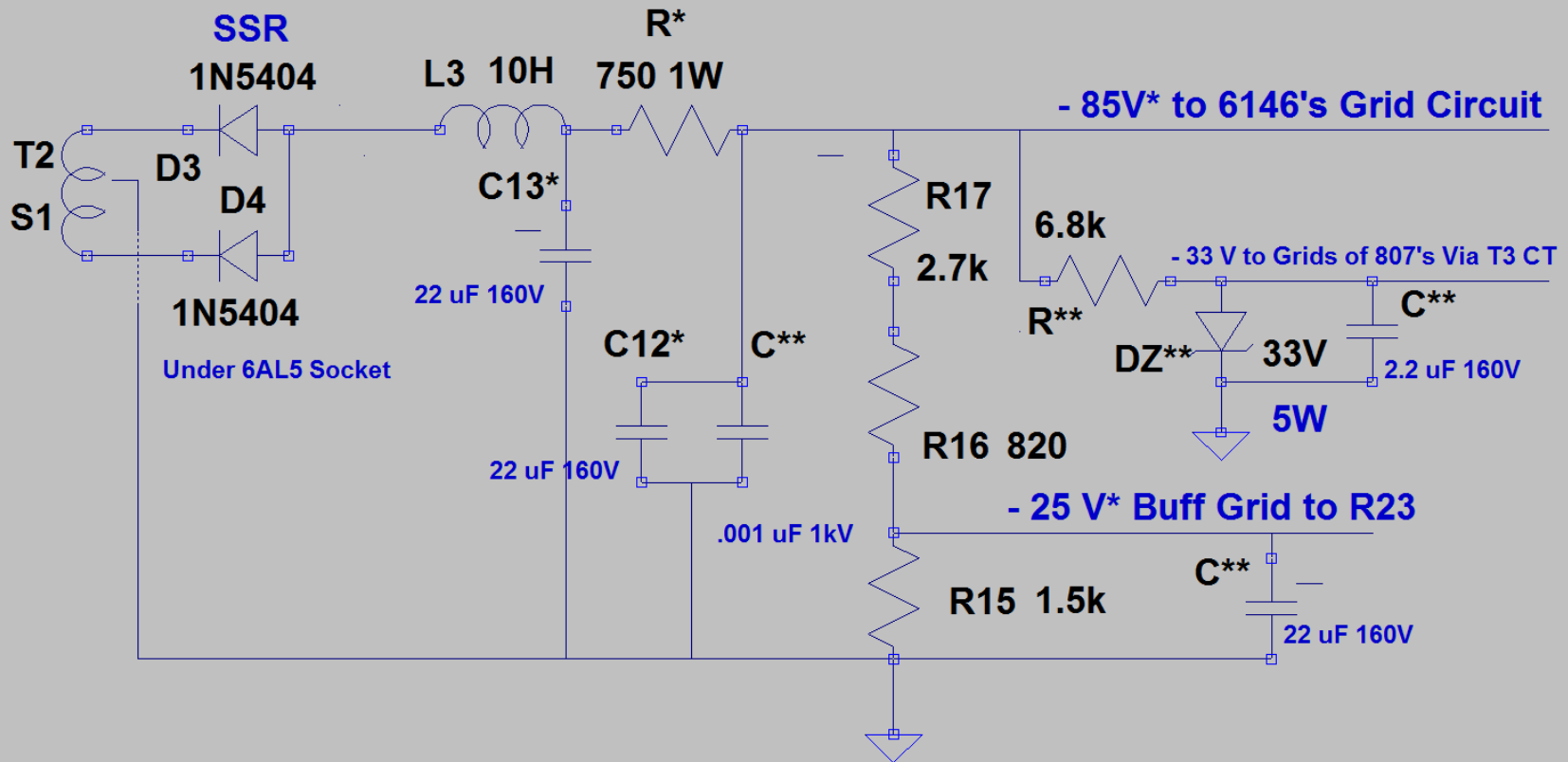
# Viking II-CDC LV Supply

LV = 340V KU and 315V KD\*

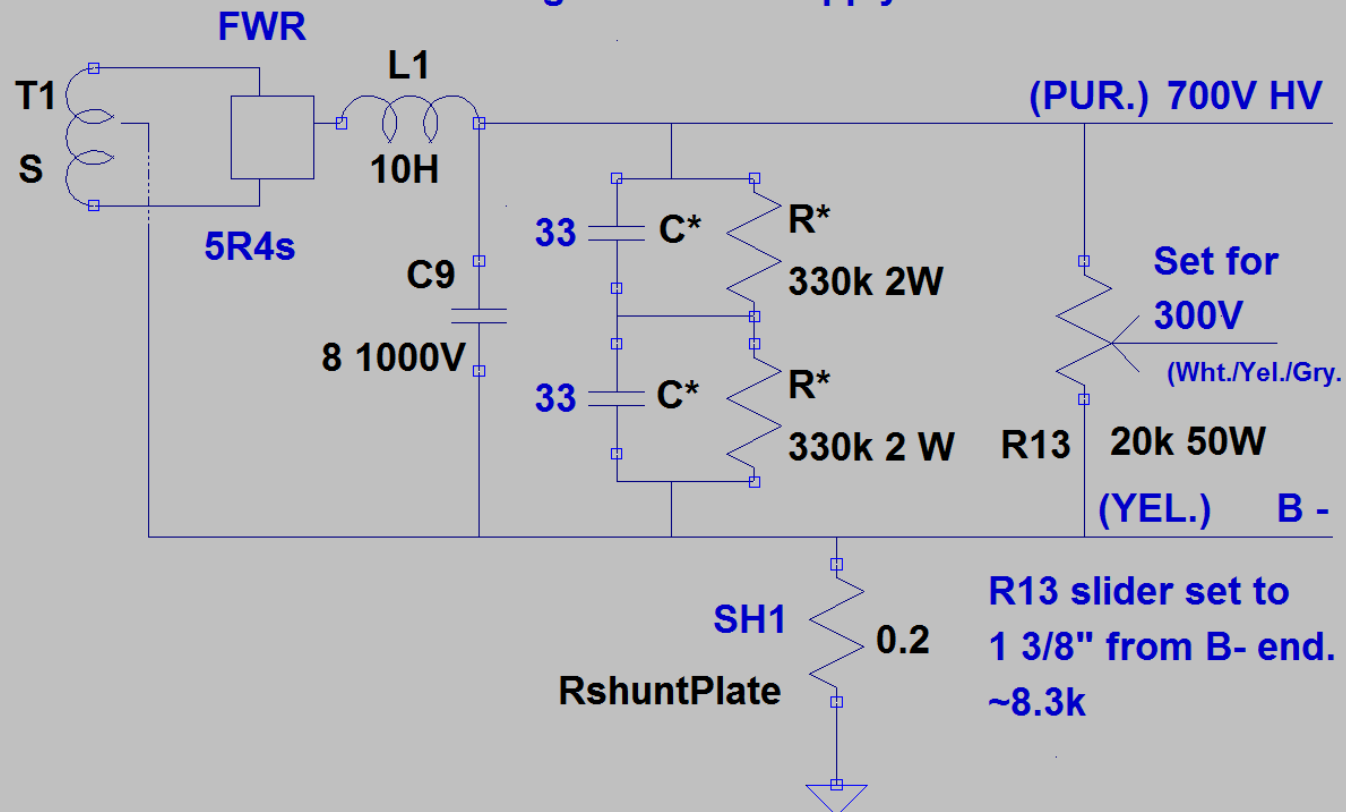
5V4, SSR Module or 1N5408's



## Viking II-CDC Bias Supply

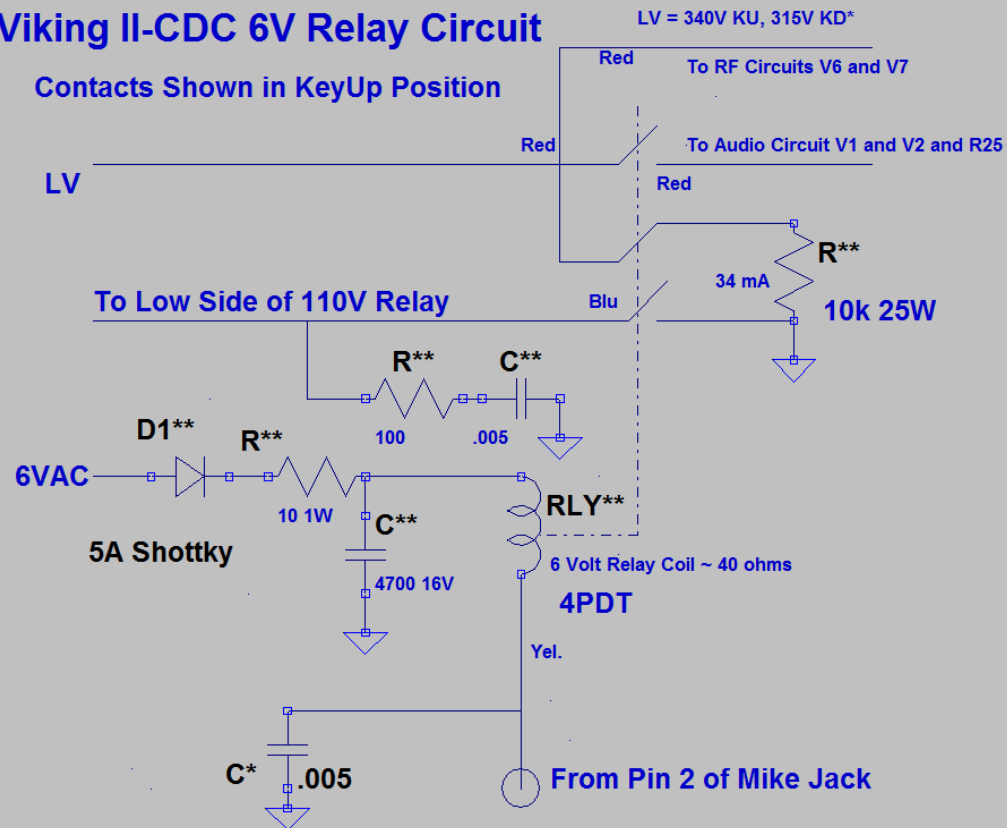


# Viking II-CDC HV Supply



# Viking II-CDC 6V Relay Circuit

Contacts Shown in KeyUp Position





To Screen Grid V5

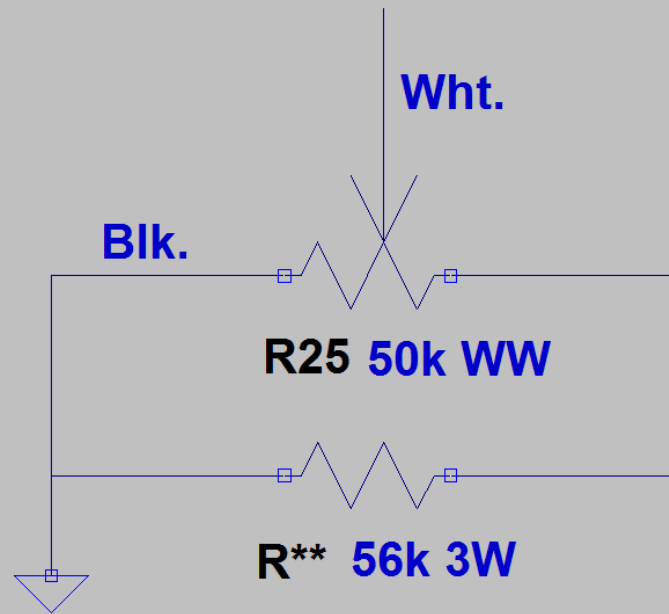
Wht.

Blk.

R25 50k WW

From LV via Relay  
Red

R\*\* 56k 3W



**Components marked \*\* are on PC Board**

