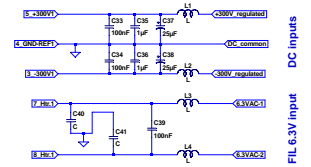


GAP/R K2-W Operational Amplifier
Input +/-50V
Input Z 100 MEG Ohms
Biasing: Positive input approx +1.5V
Output +/- 50V
Output Z < 1K Ohms O/L
and 1 Ohm w/ feedback
Output Current +/-1mA into 50K
Rise time 2us, BW>100KC
Drift 5mV per day ref. to input
Power supply +/-300VDC
@ 4.5 mA
and 6.3V@600mA

ALL PASS NETWORK



DC inputs

