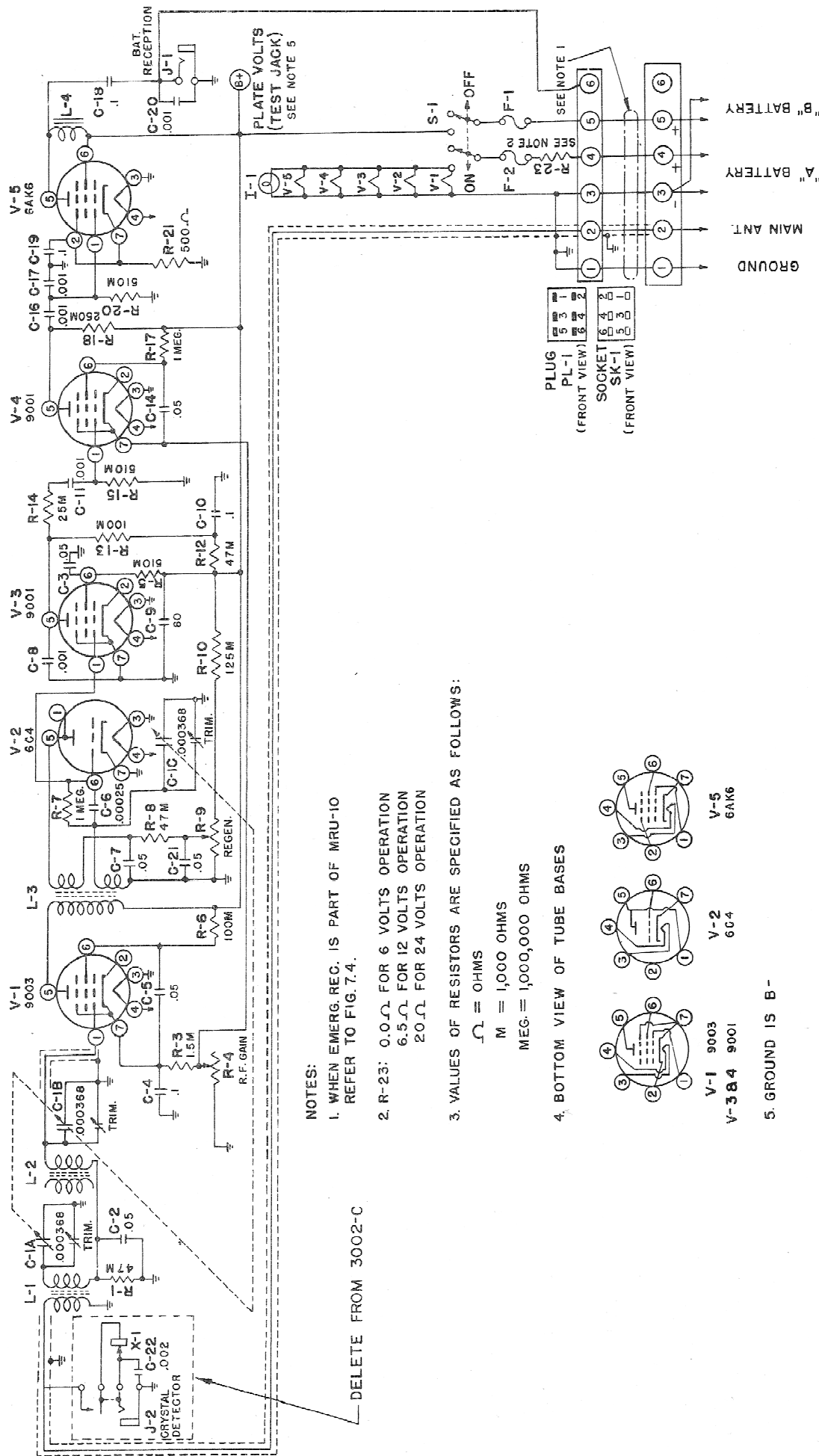


ELECTRICAL PARTS LIST
FOR
RECEIVER TYPE 3002-C
M-2767-1

<u>Stock No.</u>	<u>Symbol</u>	<u>Description</u>	<u>Dwg. / Cat. No.</u>
282-25	C1	Capacitor, 3 Section Variable, 355 mmf per section with Trimmers	M-1082-2
279-2	C2 C3 C5 C7 C14 C21	Capacitor, Paper tubular, .05 mf, $\pm 10\%$, 400 VDCW	Aerovox 484
279-3	C4 C10 C18 C19	Capacitor, Paper tubular, .1 mf, $\pm 10\%$, 400 VDCW	Aerovox 484
274-42	C6	Capacitor, Silver Mica, .00025 mf, $\pm 5\%$, 500 VDCW	C-D 2R5T25
274-11A	C8 C11 C16 C17 C20	Capacitor, Silver Mica, .001 mf, $\pm 5\%$, 500 VDCW	C-D 1R5D1
276-16	C9	Capacitor, Electrolytic, Tubular, 80 mf, 150 VDCW	C-D BR8015
357-3	F1	Fuse, 1/16 Amp, Slo-Blo, 3 AG	Littelfuse 313.062
353-7	F2	Fuse, 3 Amps, 3 AG	Littelfuse 313003
420-3	I1	Lamp, 6-8V, .15 ma, Miniature Bayonet Base	Mazda #47
408-2	J1	Jack, Single Circuit, Open	Mallory SC-1A
257-4	L1 L2	Inductance, Antenna Coil Inductance, R.F. Coil	M-1150-2-4
257-10	L3	Inductance, Detector Coil	M-1150-2-6

RECEIVER TYPE 3002-C (Cont'd.)

<u>Stock No.</u>	<u>Symbol</u>	<u>Description</u>	<u>Dwg. /Cat. No.</u>
220-3	L4	Inductance, 22 hy, 35 ma, 400 ohm	M-2456-1 or F-25481-1
636-2	R1 R5 R8 R12	Resistor, Insulated Carbon, 47 K, ±10%, 1/2 Watt	IRC BT 1/2
622-2A	R3	Resistor, Insulated Carbon, 1.5 K, ±10%, 1/2 Watt	IRC BT 1/2
557-14	R4 R9	Potentiometer, WW, Linear Taper, 50 K	M-7360-1
639-2	R6 R13	Resistor, Insulated Carbon, 100 K, ±10%, 1/2 Watt	IRC BT 1/2
644-3	R7 R17	Resistor, Insulated Carbon, 1 meg ohm, ±10%, 1/2 Watt	IRC BT 1/2
639-4	R10	Resistor, Insulated Carbon, 125 K, ±10%, 1/2 Watt	IRC BT 1/2
634-4	R14	Resistor, Insulated Carbon, 25 K, ±10%, 1/2 Watt	IRC BT 1/2
643-1A	R15 R20	Resistor, Insulated Carbon, 510 K, ±10%, 1/2 Watt	IRC BT 1/2
642-1A	R18	Resistor, Insulated Carbon, 250 K, ±10%, 1/2 Watt	IRC BT 1/2
617-1A	R21	Resistor, Insulated Carbon, 500 Ω , ±10%, 1/2 Watt	IRC BT 1/2
779-8	S1	Switch, Toggle, 2 Pole, ST	H&H 81024 FA
830-10	V1	Vacuum Tube, Type 9003	
830-6	V2	Vacuum Tube, Type 6C4	
830-2	V3 V4	Vacuum Tube, Type 9001	
830-5	V5	Vacuum Tube, Type 6AK6	



NOTES:

1. WHEN EMERG. REC. IS PART OF MRU-10 REFER TO FIG. 7.4.

2. R-23: 0.0Ω FOR 6 VOLTS OPERATION
6.5Ω FOR 12 VOLTS OPERATION
20Ω FOR 24 VOLTS OPERATION

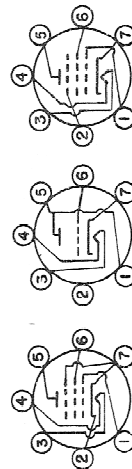
3. VALUES OF RESISTORS ARE SPECIFIED AS FOLLOWS:

Ω = OHMS

M = 1,000 OHMS

MEG. = 1,000,000 OHMS

4. BOTTOM VIEW OF TUBE BASES



5. GROUND IS B-

MACKAY RADIO & TELEGRAPH CO.
MARINE DIVISION
NEW YORK

SCHEMATIC DIAGRAM

EMERGENCY RECEIVERS 3002B8C

APP'D	ENG.	DRAWN	L.M.	M-1055-2 J
-------	------	-------	------	------------