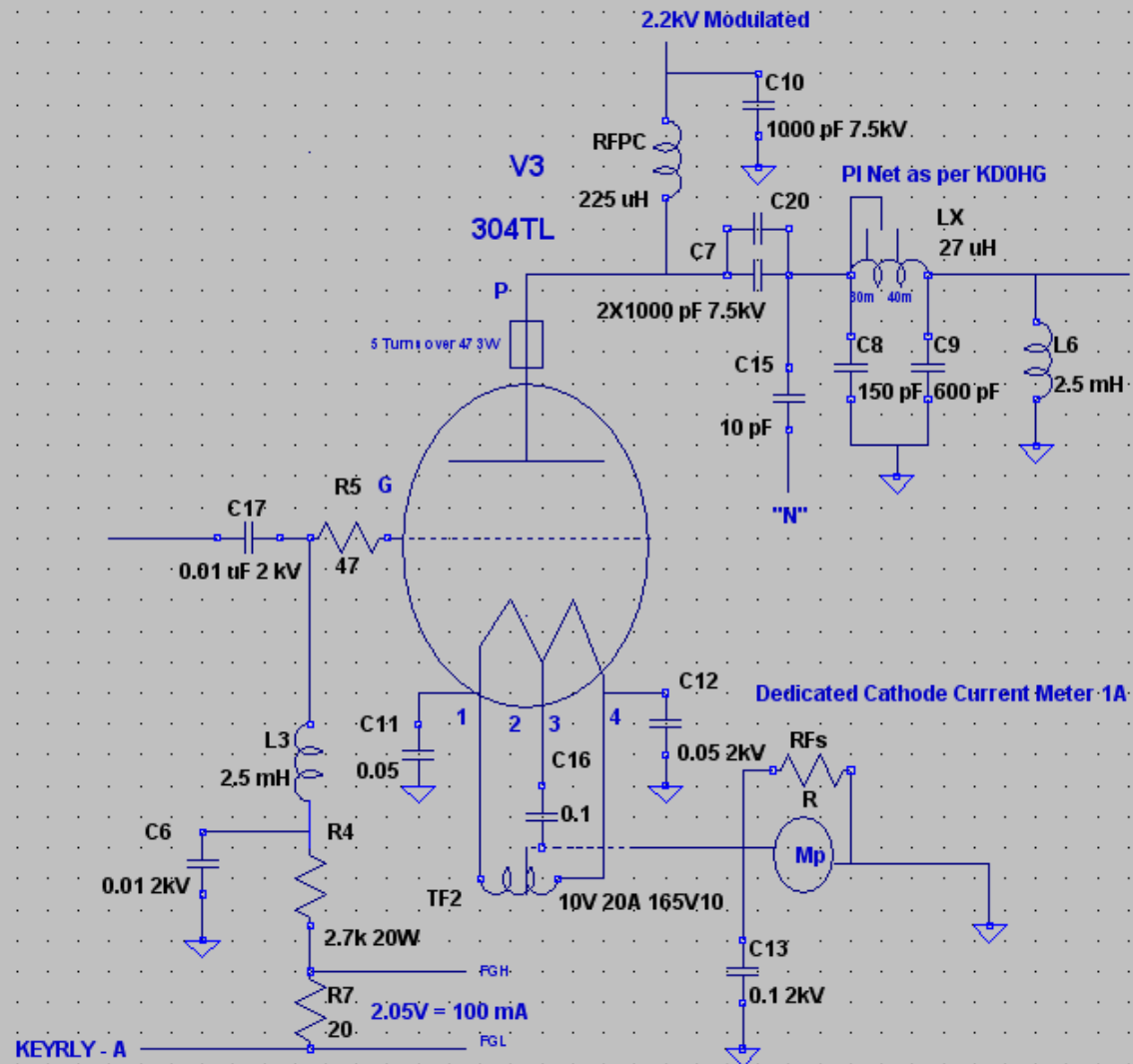
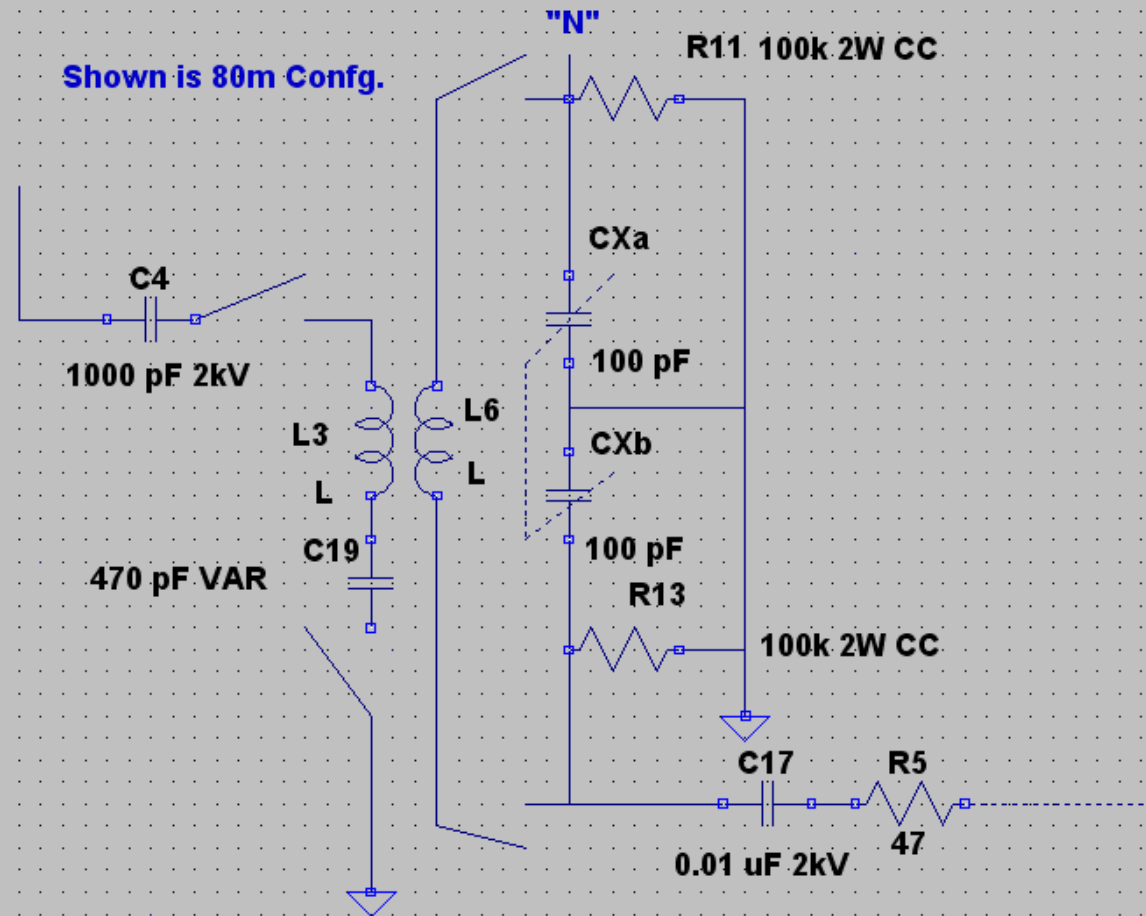


AM RF Deck 304TL Final

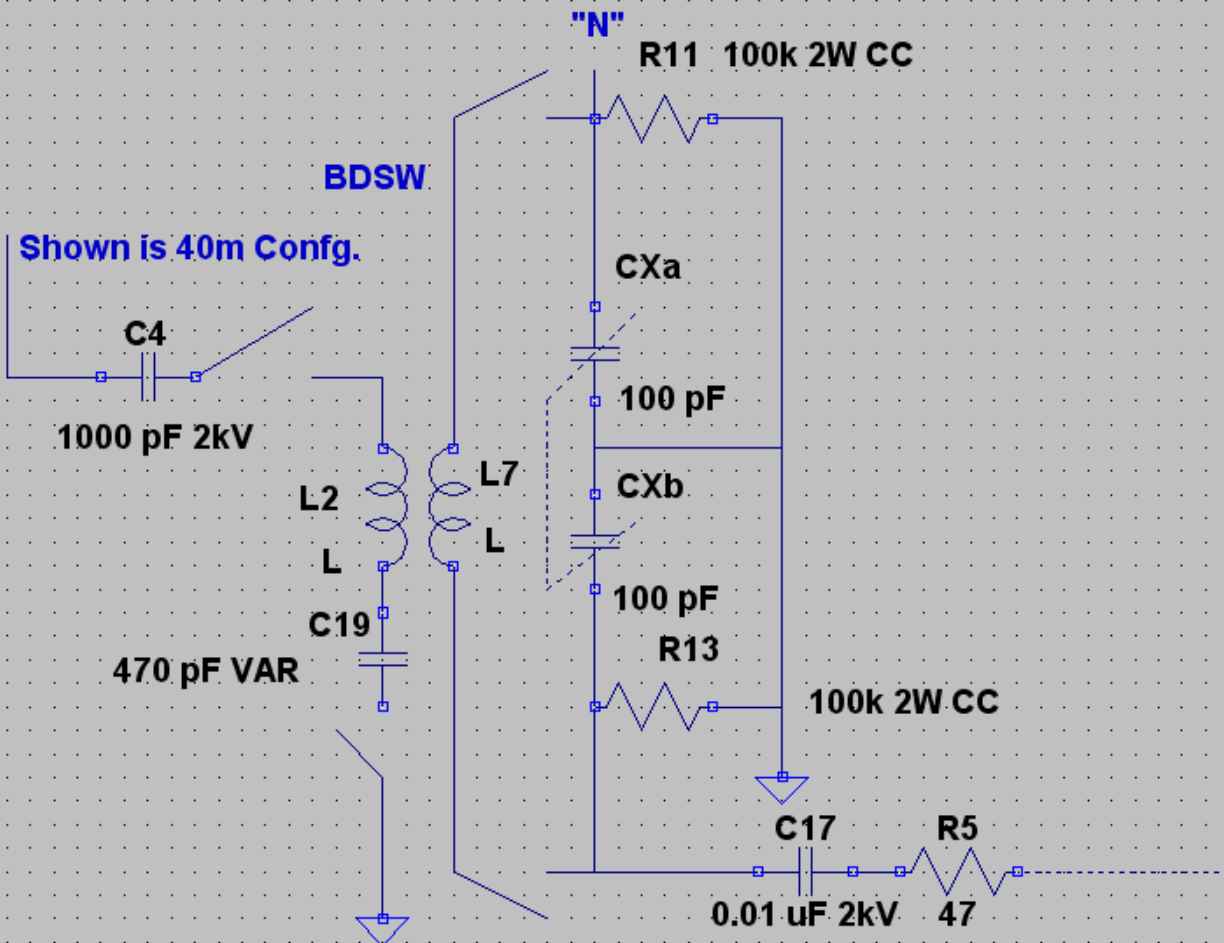


80m Grid Tuning Circuit

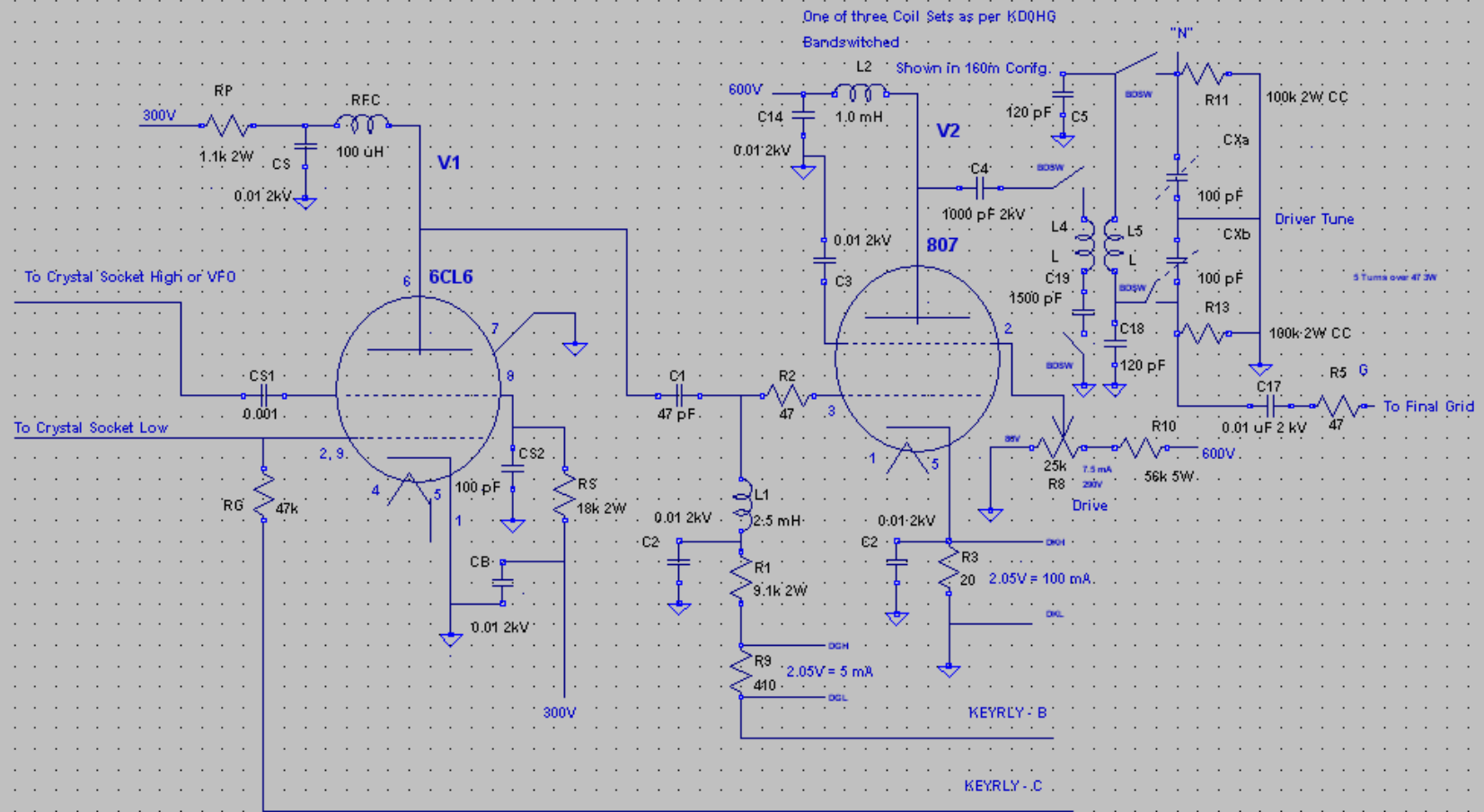
Shown is 80m Config.



40m Grid Tuning Circuit

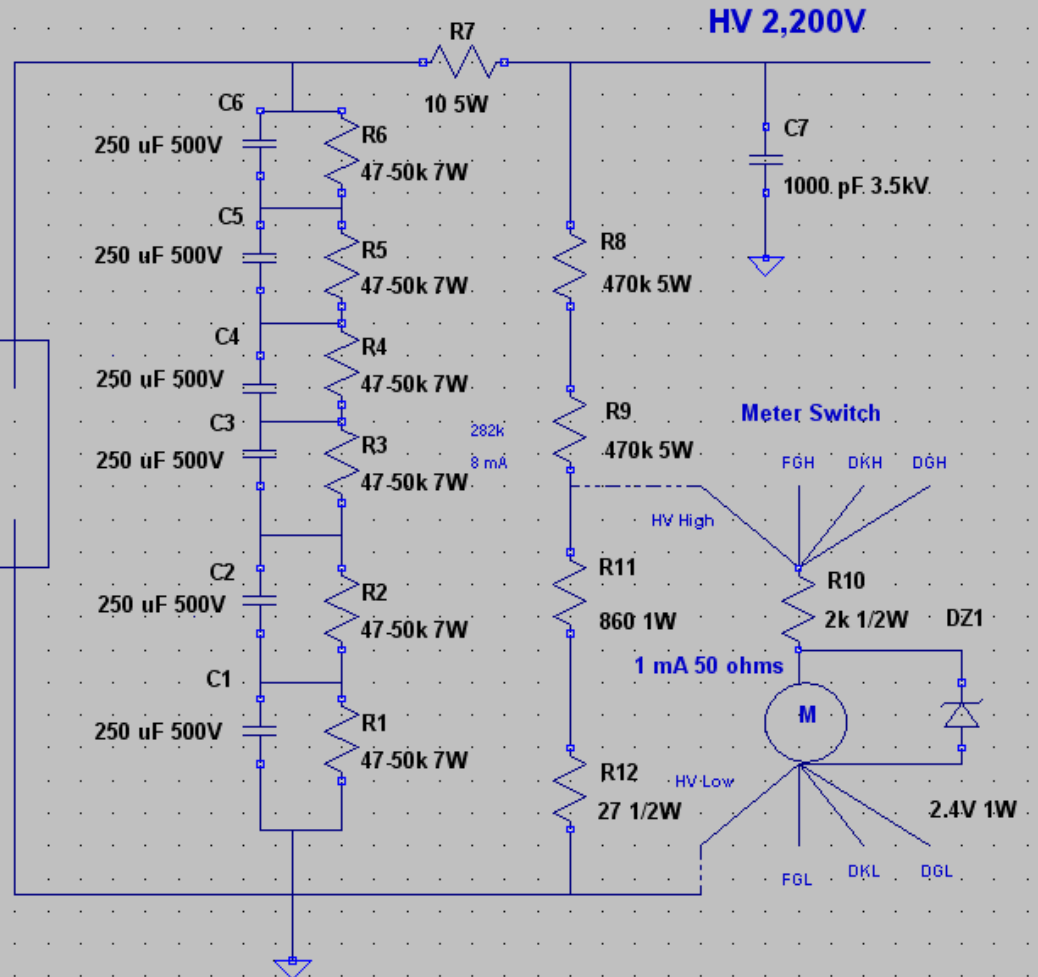
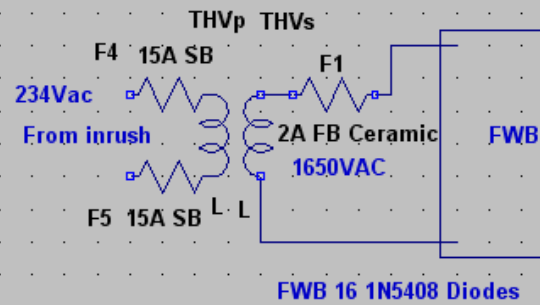


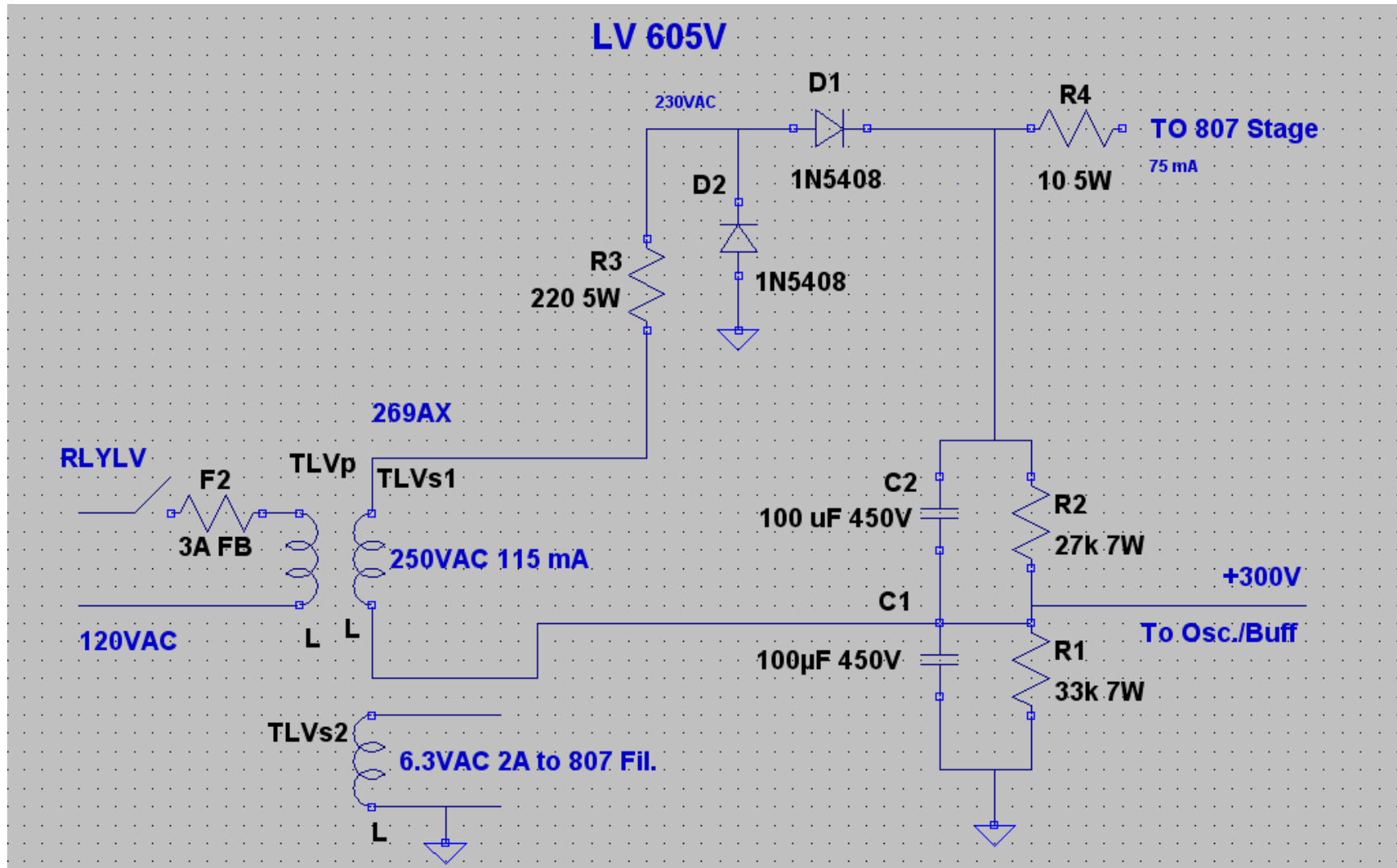
AM RF Deck Exciter (160m Grid Tuning)



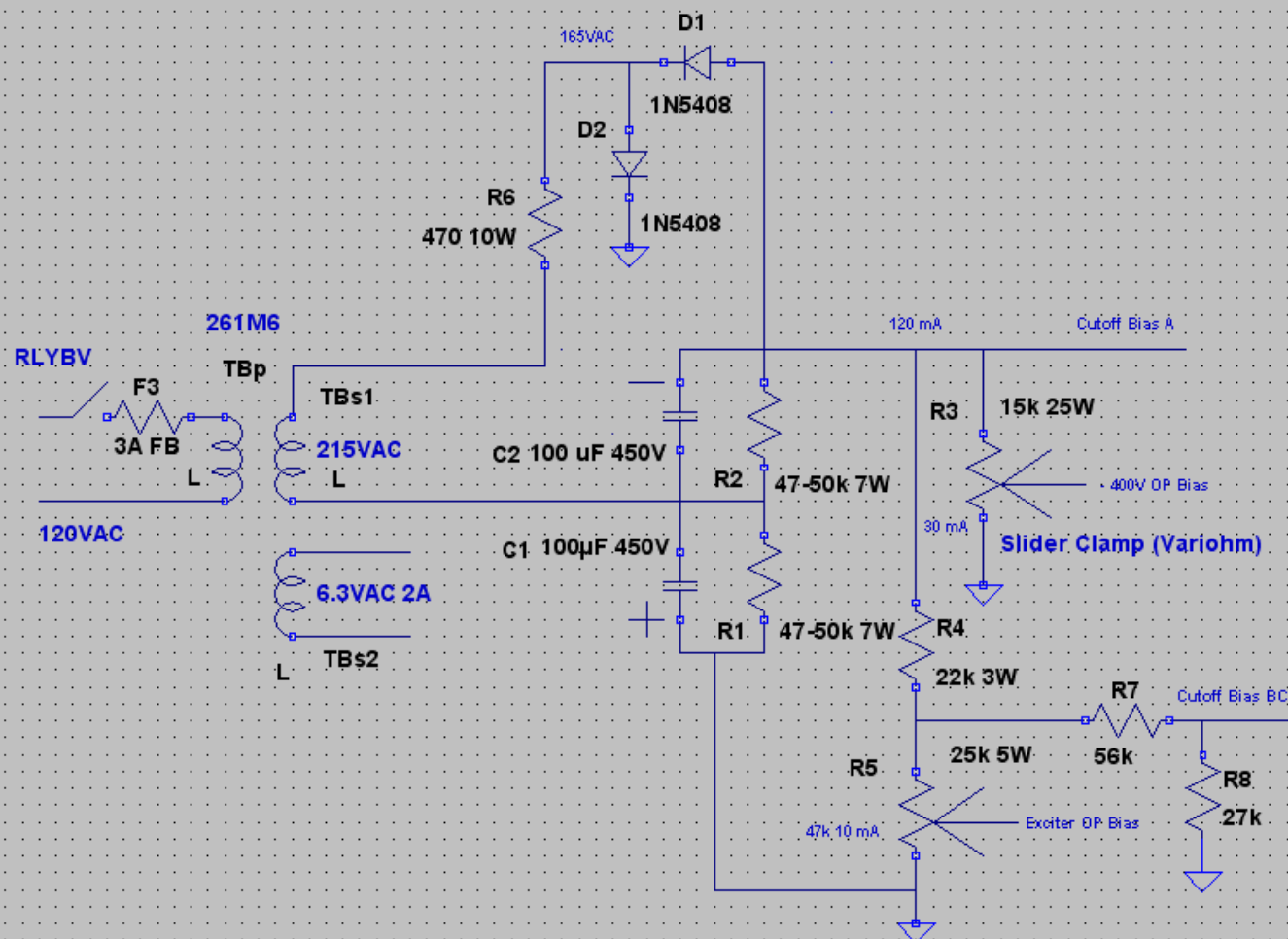
HV Power Supply

1650/1515/1375V @1.2A CCS K
CORE)A-0480/ C- CORESTYLE #)10 'HIPERSIL C-CORE
PR)234 VAC 60 HZ 1 PH
S1)0-1375-1515-1650 VAC @1.2A CCS
DM) HT= 8.375 WT.= 8.075 .DT= 7.688 MD = .3.937 MW = .5.500

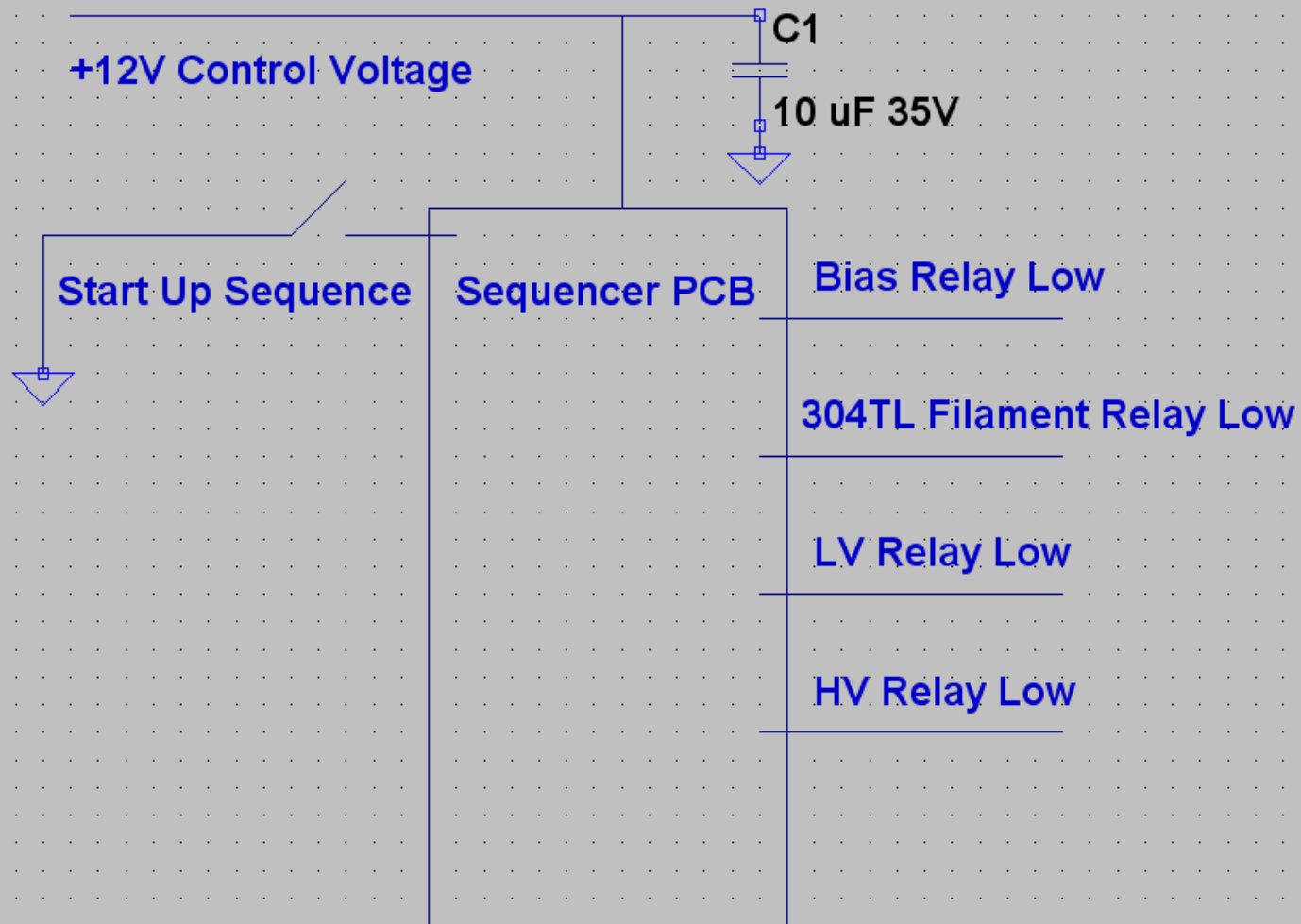




- 450V Bias



Power (Relay) Sequencer



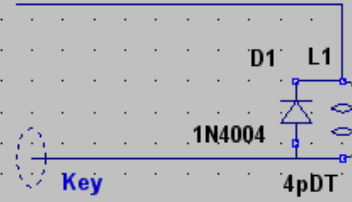
Key Circuit

Cutoff Bias A
- 400V OP Bias

KEYRLY - A

+12V Control Supply

Shown in Key Down



Cutoff Bias BC

Exciter OP Bias

KEYRLY - B

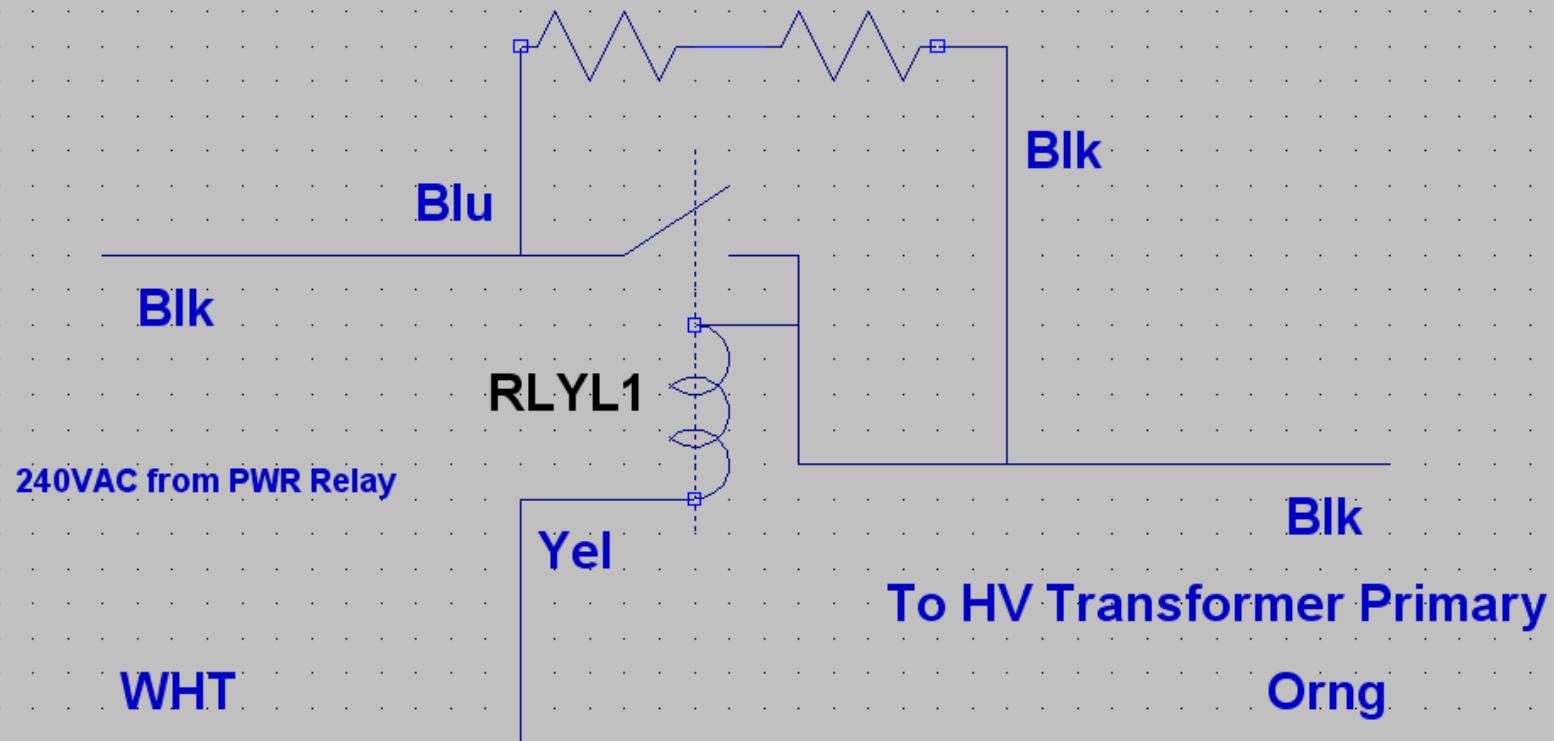
KEYRLY - C

N/C

KEYTRF

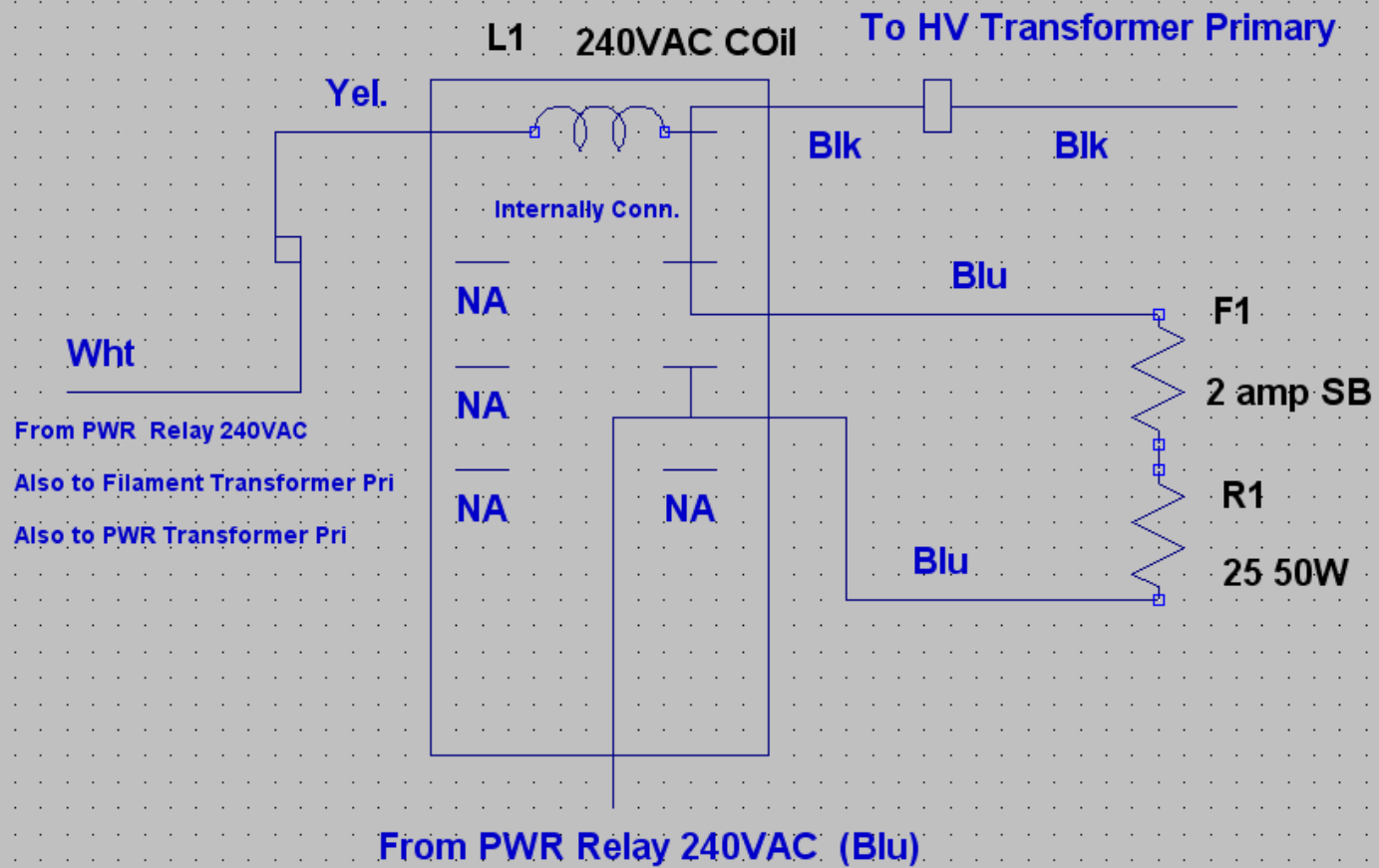
304TL Inrush Protection Circuit

R1 25 50W Dale F1 2 amp SB



RLY1 Deltrol DPDT 240 VAC Coil 10Amp Contacts

304TL Inrush Protection Relay Connections



Power On +12 Volts Control

