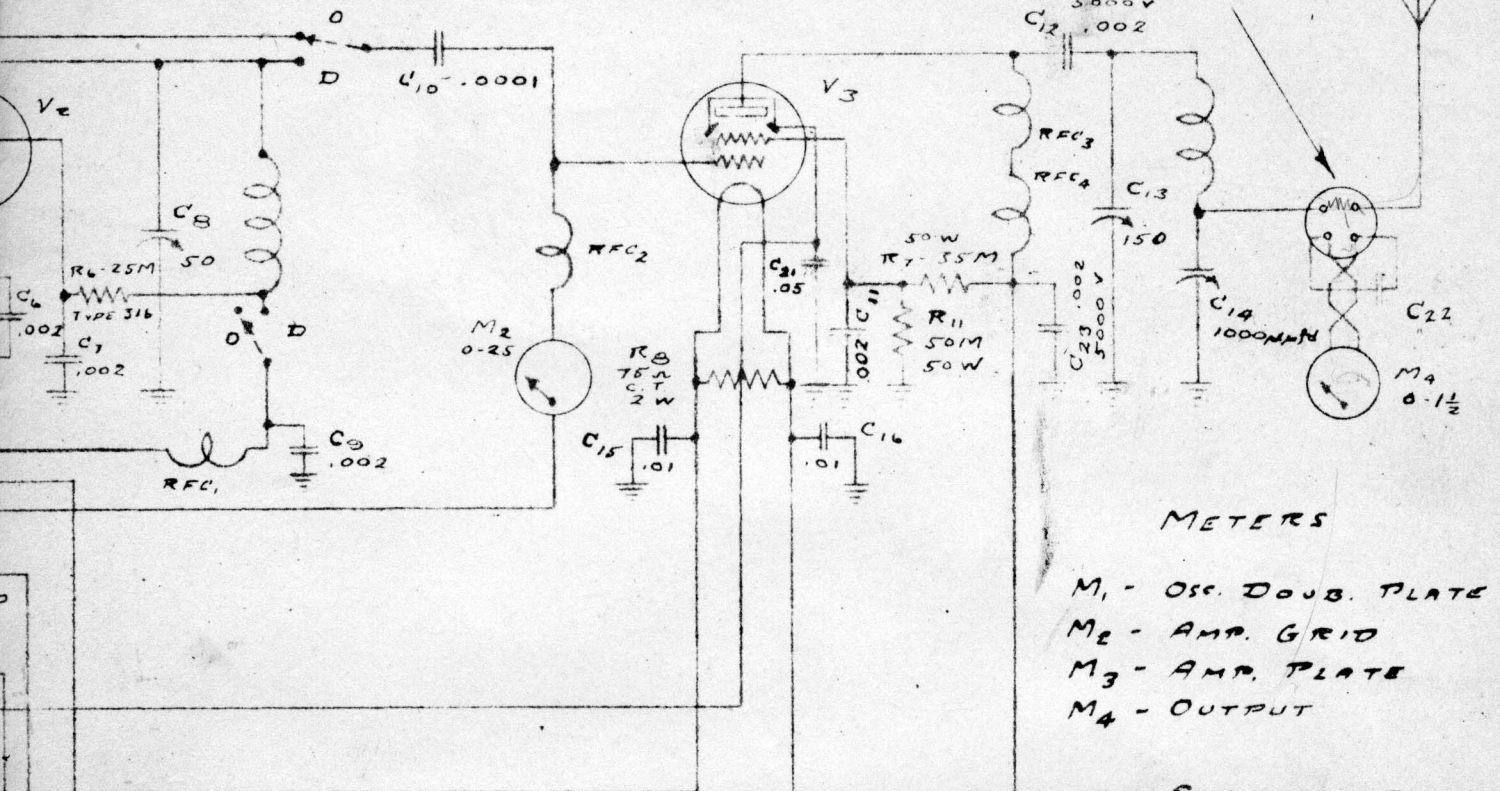


814

THERMOCOUPLE



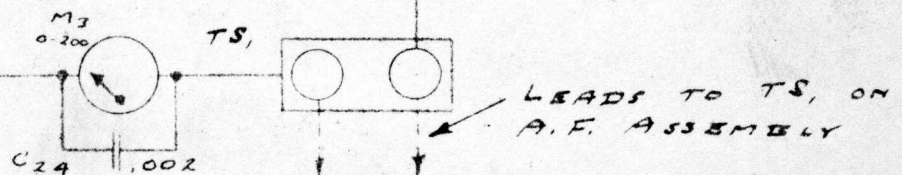
METERS

- M₁ - OSC. DOUB. PLATE
 M₂ - AMP. GRID
 M₃ - AMP. PLATE
 M₄ - OUTPUT

- SWITCHES -

- S₁ - "TUNE"
 S_{2A, B} - "HI-LO"
 S₃ - INTERLOCK
 ON TEAR OF
 T.E. CHASSIS.

DOTTED SWITCHES IN OSCILLATOR AND
 DOUBLER PLATE CIRCUITS AND DOUBLER
 GRID CIRCUIT, ARE IN POSITION "D" WHEN
 DOUBLING AND IN "O" WHEN NOT
 USING DOUBLER. THESE CONNECTIONS
 ARE MADE AUTOMATICALLY BY
 JUMPERS IN THE PLUG-IN COILS.
 SEE COIL DIAGRAMS.



SCHEMATIC WIRING DIAGRAM

R. F. ASSEMBLY

TYPE 100-T MODEL 39

HARVEY RADIO LABORATORIES, INC.
 CAMBRIDGE, MASS.

FEB. 10, 1939

DRAWN-GLD
 APPROVED -

2023