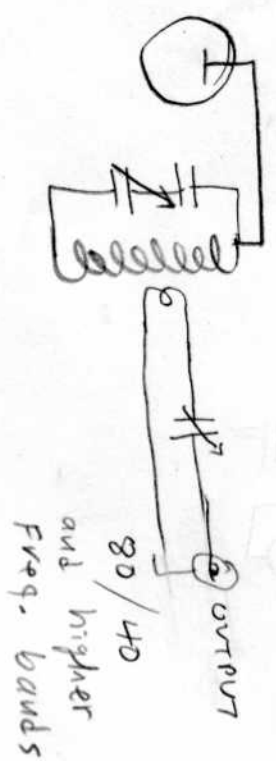
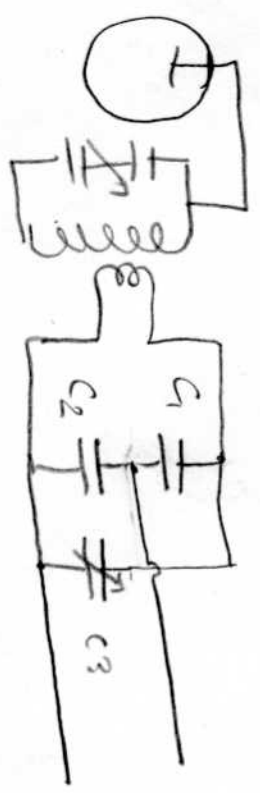


Feeding 50- Ω Coax line on 160 with link
coupled final

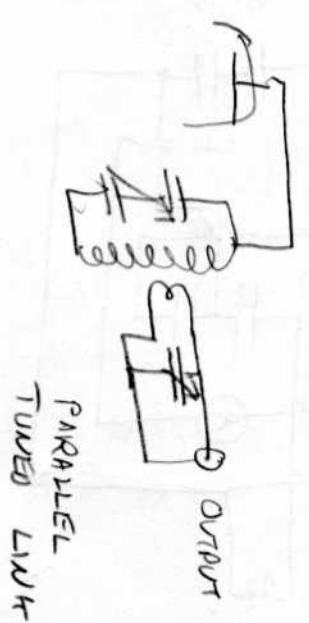


SERIES TUNED LINK

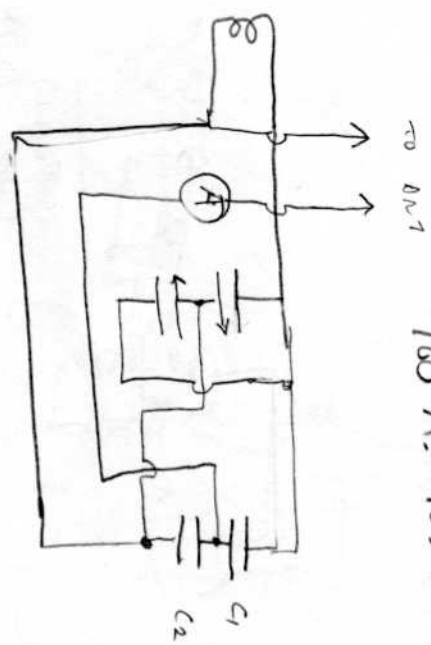
NEITHER SERIES NOR PARALLEL TUNED LINK WOULD FULLY
LOAD ON 160, EVEN WITH LINK SET AT MAXIMUM COUPLING
BUT THIS WORKS:



OR

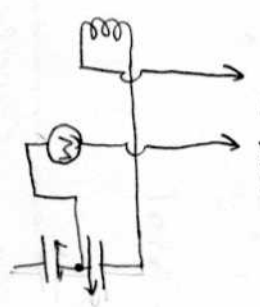


160 M. POS



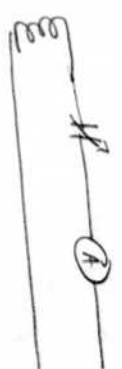
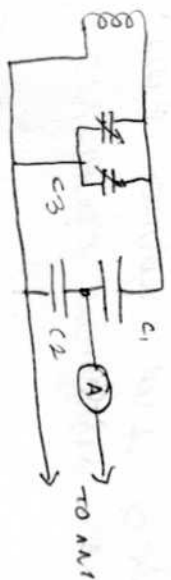
TO ANT

80 M. POS



↓

↓



$C1, C2 \approx .002$ MFD MICR @ 6 AMPS RF

$C3$ 600/600 PF VARIABLE

160 / 30-40 LINK COUPLING
TO 50 Ω RES. LOAD

